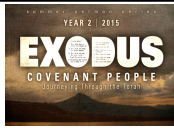


GREATER... Growth ~ Connection ~ Service ~ Reach ~ Sacrifice

GREATER GROWTH



GENESIS VC SUNDAY BIBLE STUDY: Join us at 9:30am in the Genesis Room (VC) for a study entitled 'Deeper into Exodus'.

WEDNESDAY EVENING ADULT BIBLE STUDY: We will be watching the Charles Stanley DVD study, "God's Precious Promises". Join us from 6:30-8pm in room 1-250 (VC Fireside). Contact: Michael Zenner, 651-592-9435.

FAITH AND FRIENDS, a Bible class for adults with developmental disabilities, will meet today and August 9, 9:30-10:20am, room 1-507 (Ruth VC). Stay in touch with friends over the summer as we gather to learn about Jesus. Questions? Contact Jeanne Dicke 651-704-9464.

SUMMER BIBLE STUDIES:

WEDNESDAY EVENING CLASS: Before Amen—The Power of a Simple Prayer... A women's study for those who struggle with prayer, wish they were better at it or are new to prayer. Join us on Wednesday's through July 22, 7-8:30pm in room 1-300 (Isaiah room main floor VC). Contact Mary Lehman at 651-739-5144 x201 or lehmanm@woodburylutheran.org. Cost: \$6.50 for workbook.

THURSDAY: The Book of Acts - Thursdays in room 1-250 (Fireside VC) till the end of August, 10-11:30am. Taught by Pastor Paul Pfothenhauer. The Acts of the Apostles, often referred to simply as Acts, is the fifth book of the New Testament; it tells of the founding of the Christian church and the spread of its message to the Roman empire.



GREATER SERVICE



THE CHRISTIAN CLOTHES CLOSET is a clothing ministry of Woodbury Lutheran Church. The closet is open every Friday 9am-1:30pm at the VC Campus. All clothing is free to those in need in our community. Want to volunteer? Workers are always welcome! Contact Gloria Johnson at 651-714-0245 to volunteer. Want to donate? We accept donations of clean seasonal clothing (all ages), shoes, bed linens, towels and blankets (please no more hangers). Donation tax receipts are available.

"Multiplying Disciples. Transforming Lives"

To follow Jesus Christ, grow as His disciples, serving and telling others, so that all may know Him as Savior and Lord.

WLC INFORMATION

WANT MORE INFORMATION? Woodbury Lutheran Church ministries, worship schedule and activities at [all campuses](http://allcampuses.woodburylutheran.org) can be found at: the welcome desk in the lobby, at www.woodburylutheran.org, by downloading our church app at <http://get.theapp.co/4bbf>, or contacting us at 651-739-5144. If you want more info go to myWLC at myWLC.org, where you can connect with a group, see the church calendar, look for volunteer opportunities, check out your profile/financial information and more.



GREATER CONNECTION



READY TO TAKE YOUR NEXT STEP? The WLC Connection Center is available to help you determine what your next step might be on the Discipleship PATH. Whether you want to explore options or you already know what your next step will be, our Connectors would love to help! The Connection Center staff is available each Sunday from 9-9:30am, 10:30-11am and 12-12:30pm in the lobby or at 12pm outside of the Genesis Room.

NEW WEBSITE: Over the past several months we have completely re-designed our website to make it easier to navigate, especially for people who are seeking to find out more information about our church.

It is not a surprise that the first place people today go when looking for a new church is the website, so it is essential that our site be easy to navigate and offer the information folks are seeking. What this means is a simpler site with less noise that helps people know what we want them to know. You will also notice how the new site seamlessly incorporates our discipleship path.

Here are a few highlights:

- Listen to hundreds, yes hundreds :) of both current and past SERMONS.
- Use the invitation page to INVITE A FRIEND through e-mail, Facebook or Twitter.
- Search out SERVE opportunities.
- Get connected into a SMALL GROUP.
- Log in to MyWLC.
- GIVE securely and conveniently.



I hope that you are all having a great summer as we walk the discipleship path together! Pastor Tom



STEPHEN MINISTRY - This "caring" ministry provides confidential, one to one, Christian care to those who are experiencing difficult life challenges. Need someone to talk with? At Valley Creek, contact Larry W. (men) 651-458-0147, or Linda W. (women) 651-458-0147. For other information: Shirley M. 651-276-7224.

INTRO TO WOODBURY LUTHERAN CLASS meets on July 19 at 9:30am in the Lounge (VC). This class is especially for second and third time guests, or anyone interested in finding out more about Woodbury Lutheran. Join us to find out who we are as a congregation, what we believe and value, where we see God leading us and what we hope for you as a growing follower of Jesus. Intro to WLC meets on the third Sunday of each month.

GREATER SACRIFICE

As of June 30, 2015

GENERAL FUND

Year to Date Actual:	\$1,331,689
2015 Total Year to date Budget:	\$1,435,623
	(\$103,934)



DO YOU WANT YOUR OFFERING TO GO TO A SPECIFIC FUND/MINISTRY? When submitting offering checks, please enter the fund name on the memo line of the check if the offering is for a fund other than the General Fund. If the memo line is left blank, then General Fund (money used where needed) is assumed. Also, an offering check can be split into more than one fund. Just enter the fund names and amounts for each fund on the memo line. If you have questions, contact Mike Hunst at 651-353-3472 or at mhunst@comcast.net.

Reach. Grow. Serve.

OAK HILL CAMPUS ANNOUNCEMENTS



READY TO TAKE YOUR NEXT STEP? The WLC Connection Center is available to help you determine what your next step might be on the Discipleship PATH. Whether you want to explore options or you already know what your next step will be, our Connectors would love to help! The Connection Center staff is available each Sunday from 10-10:30am and 11:30am-12pm in the narthex.

STEPHEN MINISTRY - This "caring" ministry provides confidential, one to one, Christian care to those who are experiencing difficult life challenges. Need someone to talk with? At Oak Hill, contact: Bernice B. (women) 651-340-3366, or Paul L. (men) 651-653-3467. For other information: Shirley M. 651-276-7224.



REGISTER NOW AND SAVE TIME THIS FALL! Online registration is available at woodburylutheran.org.

SAVE THESE DATES!

- Kids LINK Open House on September 13. Meet small group leaders, find rooms, have treats!
 - Weekend of September 20 Kids LINK begins!
- Questions?? Contact Molly Schulz at schulzm@woodburylutheran.org or 651-739-5144 ext. 332.



WLC DISCIPLESHIP PATH



WORSHIP



GROW



SERVE



REACH

YOUTH MINISTRY

WHIRLYBALL (9th-12th): Join us for Whirlyball on Thursday, July 16, 5:30-10pm. What is Whirlyball you ask? It's the greatest game ever invented! It's a sport that combines basketball, hockey, lacrosse, and bumper-cars, and it's amazing! If that wasn't awesome enough we're also going to play a few games of laser tag at the largest laser tag arena in Minnesota! Sign up online and download required waiver form at woodburylutheran.org/ministries/youth/high-school/. Cost is \$20. Don't miss it! Contact: Patrick Brewer.



MIRACLE LEAGUE SERVICE PROJECT: Volunteer with the East Metro Miracle League! We will meet at the Bielenberg Sports Center, black field cluster, off of Hargis Road. We'll serve from 5:30 -8:30pm, Sign up online. Serving dates are Monday July 27, and Wednesday August 19. EMLL is a baseball league for kids with special needs and is a super fun way to serve! On Miracle League nights we'll help our buddies play the game and cheer them on! It's going to be great!

MS SUMMER STRETCH (SS): Our next Summer Stretch is Thursday, July 16 from 8:15-5pm. The fun event will be a move at Woodbury 10. Registration for the July 16 event is closed. Our next event is Grand Slam on July 23, waiver required. Haven't signed up yet? You must register one week in advance for each SS date. To register, please sign up online or contact Lindsey Schmidt (you can check out the website for FAQ). Cost is \$20 per week you attend (ValleyFair is \$30).

MIDDLE SCHOOL DULUTH MISSION TRIP sharing will be today, 12-2pm in the Bridge (VC).



SUMMER BIBLE STUDY for high school and middle school. Come for treats, games and a study on the book of John.

MS Summer Bible Study (6th-8th) Join us on Monday nights 6:30-8:30pm for Bible Study at the Valley Creek Campus in the Bridge.

HS Summer Bible Study (9th-12th) Come to the Brewer House on Tuesday's this summer, 6:30-8:30pm! (1220 Silverwood Court Woodbury, MN).

KIDS AND FAMILY MINISTRY

REGISTER NOW AND SAVE TIME THIS FALL! Online registration is available at woodburylutheran.org.

SAVE THESE DATES!

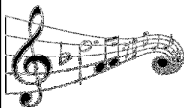
- Kids LINK Open House on September 13. Meet small group leaders, find rooms, have treats!
- Weekend of September 19 and 20 Kids LINK begins!

Questions?? Contact Nancy Schubbe at schubben@woodburylutheran.org or 651-739-5144 ext. 203.



OTHER MINISTRIES AND EVENTS

COLORADO PEACHES FOR SALE! We are selling fresh picked peaches to raise money for our Youth Scholarship program. Price per crate is the same as last year! One crate for \$29, or half-crate for \$14.50. (One crate is 18 pounds, approximately 40 juicy peaches). Order forms are available at the welcome desk or online woodburylutheran.org/ministries/youth/youth-fundraising/. Please get your order in by July 19. Delivery day will be around August 10, peaches will be about 2-4 days old off the tree when they arrive. Please contact the Retters at 651-739-5326 with questions or to volunteer to help with the event. Thanks for supporting our youth!



MUSIC MINISTRY OPPORTUNITIES: The Praise Band has an opening for a female vocalist for the '15-'16 season. Rehearsals are Tuesdays at 6:30pm beginning in Sept. Celebration, our adult vocal ensemble, has openings for a tenor and a soprano. Rehearsals are Wednesdays at 5:50 pm. beginning in Sept. Instrumentalists are needed for our Christmas Concert Orchestra, players should be high school level or above. For more information about any of these opportunities please contact Mark Shepperd at 651-739-5144 or shepperdm@woodburylutheran.org.

POSITIONS AVAILABLE: Mothers of Preschoolers (MOPS) needs childcare workers for 2015-2016 school year. MOPS meets every other Monday 9-11am at the VC campus. Ages of children range birth to kindergarten. There are paid and volunteer positions available. MOPS is a Christian ministry that seeks to connect mothers throughout the community to laugh, embrace life, cry, and develop a network for each other. The children's program during MOPS meetings is invaluable to attending moms. Contact: Chelsea Shelton 773-332-0439 or moppetswoodbury@gmail.com.

GOD IS BIGGER THAN CANCER: Are you a cancer survivor, caregiver past or present, or current cancer patient? Join others impacted by cancer for Scriptural encouragement and prayer. Cancer Companions meets every Monday evening, 6:30-8pm in room L-600 (VC Family Center). Topics include faith, suffering, healing, stress reduction and healthy living. For more information, contact Vicki Strong, 651-730-5049.

LIFE LINE SCREENING will be at the VC campus on Tuesday Aug. 6. They offer different risk screening tests for Diabetes, Thyroid, Heart Disease, Stroke and more. Call 1-888-653-6441 or visit www.lifelinescreening.com/community-partners to schedule your appointment and find out details on all tests offered.



PART TIME POSITION for Woodbury Lutheran Preschool school year 2015-16: Has God given you a heart for teaching young children and serving families? Come join our dynamic ministry team! Position: Assistant Teacher for Tuesday and Thursday, 11.5 hours per week, salaried position. Requirements: A minimum of 12 college quarter credits in Early Childhood Education or related fields required. Additional work hours may be available. To learn more, contact Dorothy Blaisdell, Director at 651-739-5146 or email blaisdelld@woodburylutheran.org.

"Multiplying Disciples. Transforming lives."