

GREATER... Growth ~ Connection ~ Service ~ Reach ~ Sacrifice

GREATER GROWTH

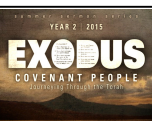
GENESIS VC SUNDAY BIBLE STUDY: Join us at 9:30am in the Genesis Room (VC) for a study entitled 'Deeper into Exodus'.

WEDNESDAY EVENING ADULT BIBLE STUDY: We will be watching the Charles Stanley DVD study, "How to claim a Promise". Join us from 6:30-8pm in room 1-250 (VC Fireside). Contact: Michael Zenner, 651-592-9435.

SUMMER BIBLE STUDIES:

WEDNESDAY EVENING CLASS: Before Amen—The Power of a Simple Prayer... A women's study for those who struggle with prayer, wish they were better at it or are new to prayer. Join us on Wednesday's through July 22, 7-8:30pm in room 1-300 (Isaiah room main floor VC). Contact Mary Lehman at 651-739-5144 x201 or lehmanm@woodburylutheran.org. Cost: \$6.50 for workbook.

THURSDAY: The Book of Acts - Thursdays in room 1-250 (Fireside VC) till the end of August, 10-11:30am. Taught by Pastor Paul Pfothner. The Acts of the Apostles, often referred to simply as Acts, is the fifth book of the New Testament; it tells of the founding of the Christian church and the spread of its message to the Roman empire.



GREATER REACH

GOT MEALS? WE DO! If you, a neighbor, or loved one in Woodbury or surrounding area have current life circumstances that would make a meal delivery a blessing, let us know! The "mitten ladies" branched out recently and made several dozen prepackaged one-dish meals for crockpot preparation. We also have sweets for dessert. We can deliver hot or frozen for cooking later. Contact Vicki Strong, 651-730-5049 to arrange a delivery.

RUN FOR WATER. RUN FOR LIFE: One of the greatest sources of kidnapping and assault is the daily walk for water in Africa by women and children. Help supply clean water and end this source of human trafficking to our sisters and daughters by supporting those running in the Twin Cities Marathon on Oct. 4. Go to teamworldvision.org/twincities/woodburylutheran to donate or leave your support donation at the church office made out to Team World Vision.



GREATER SACRIFICE

As of June 30, 2015

GENERAL FUND

Year to Date Actual:	\$1,331,689
2015 Total Year to date Budget:	\$1,435,623
	(\$103,934)



WLC INFORMATION

WANT MORE INFORMATION? Woodbury Lutheran Church ministries, worship schedule and activities at all campuses can be found at: the welcome desk in the lobby, at www.woodburylutheran.org, by downloading our church app at <http://get.theapp.co/4bbf>, or contacting us at 651-739-5144. If you want more info go to myWLC at myWLC.org, where you can connect with a group, see the church calendar, look for volunteer opportunities, check out your profile/financial information and more.



GREATER CONNECTION

READY TO TAKE YOUR NEXT STEP? The WLC Connection Center is available to help you determine what your next step might be on the Discipleship PATH. Whether you want to explore options or you already know what your next step will be, our Connectors would love to help! The Connection Center staff is available each Sunday from 9-9:30am, 10:30-11am and 12-12:30pm in the lobby or at 12pm outside of the Genesis Room.



myWLC: Join WLC's new online community: myWLC! Update your contact information, email other church goers, register/pay for events, view your contributions and print giving statements, look for serving opportunities and lots more! Most importantly: Get Connected! Log on at: woodburylutheran.ccbchurch.com. For more information or help logging in contact: Alycen at brothena@woodburylutheran.org.

WLC has a Pastoral Care Assistant (PCA) team who help Pastors with visits. The PCA team would like to know if you, or someone you know, have a specific prayer request, wish to have a visit, or would like a phone call. You may contact Pastor Tim at 651-739-5144 ext. 221 or marshallt@woodburylutheran.org.



HEALING SERVICE



HEALING SERVICE is held at the Valley Creek Campus every third Sunday. For prayers of healing, attend our service today at 12:15pm, in room 1-250 (VC Fireside). Questions, call Pastor Tim at 651-739-5144.

INTRO TO WOODBURY LUTHERAN CLASS meets on July 19 at 9:30am in the Lounge (VC). This class is especially for second and third time guests, or anyone interested in finding out more about Woodbury Lutheran. Join us to find out who we are as a congregation, what we believe and value, where we see God leading us and what we hope for you as a growing follower of Jesus. Intro to WLC meets on the third Sunday of each month.

NEW WEBSITE: Over the past several months we have completely re-designed our website to make it easier to navigate, especially for people who are seeking to find out more information about our church.

Here are a few highlights:

- Listen to hundreds, yes hundreds :) of both current and past SERMONS.
- Use the invitation page to INVITE A FRIEND through e-mail, Facebook or Twitter.
- Search out SERVE opportunities.
- Get connected into a SMALL GROUP.
- Log in to MyWLC.
- GIVE securely and conveniently.



I hope that you are all having a great summer as we walk the discipleship path together! Pastor Tom



WORSHIP



GROW



SERVE



REACH

OAK HILL CAMPUS ANNOUNCEMENTS



READY TO TAKE YOUR NEXT STEP? The WLC Connection Center is available to help you determine what your next step might be on the Discipleship PATH. Whether you want to explore options or you already know what your next step will be, our Connectors would love to help! The Connection Center staff is available each Sunday from 10-10:30am and 11:30am-12pm in the narthex.



OH YOUTH POOL PARTY July 22, 1-3pm!! Middle and High Schoolers, let's catch up and have some fun in the pool at the Hohenstein's! Please bring your favorite snack to share. We'd love to have incoming OH 6th graders too! Parents please pick up your young person at 3pm at 1210 Amundson Ct. Stillwater. (In case of rain, we will reschedule for August 19).

REGISTER NOW AND SAVE TIME THIS FALL! Online registration is available at woodburylutheran.org.
SAVE THESE DATES!

- Kids LINK Open House on September 13. Meet small group leaders, find rooms, have treats!

• Weekend of September 20 Kids LINK begins!
Questions?? Contact Molly Schulze at schulzem@woodburylutheran.org or 651-739-5144 ext. 332.



GREATER SERVICE

CARING CAPS: Would you be willing to knit or crochet some soft, Chemo/Neuro Surgery caps and baby caps/afghans? For information, call Tamara 651- 734-3974 or email tskarl@comcast.net.



Reach. Grow. Serve.

YOUTH MINISTRY

MIRACLE LEAGUE SERVICE PROJECT: Volunteer with the East Metro Miracle League! We will meet at the Bielenberg Sports Center, black field cluster, off of Hargis Road. We'll serve from 5:30-8pm, Sign up online. Serving dates are Monday July 27, and Wednesday August 19. EMML is a baseball league for kids with special needs and is a super fun way to serve! On Miracle League nights we'll help our buddies play the game and cheer them on! It's going to be great!



MS SUMMER STRETCH (SS): Our next Summer Stretch is Thursday, July 23 from 8:15-5pm. The fun event will be at Grand Slam, download and bring the required waiver. Registration for the July 23 event is closed. Our next event is swimming at Cascade bay. Haven't signed up yet? You must register one week in advance for each SS date. To register, please sign up online or contact Lindsey Schmidt (you can check out the website for FAQ). Cost is \$20 per week you attend (ValleyFair is \$30).

HIGH SCHOOL IDAHO MISSION TRIP meeting is today, 6:30-8:30pm at the Baumann home (3625 Williamsburg Court).

SUMMER BIBLE STUDY for high school and middle school. Come for treats, games and a study on the book of John.

MS Summer Bible Study (6th-8th) Join us on Monday nights 6:30-8:30pm for Bible Study at the Valley Creek Campus in the Bridge.

HS Summer Bible Study (9th-12th) Come to the Brewer home on Tuesday's this summer, 6:30-8:30pm! (1220 Silverwood Court Woodbury, MN).



KIDS AND FAMILY MINISTRY

REGISTER NOW AND SAVE TIME THIS FALL! Online registration is available at woodburylutheran.org.
SAVE THESE DATES!

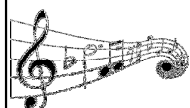
- Kids LINK Open House on September 13. Meet small group leaders, find rooms, have treats!
- Weekend of September 19 and 20 Kids LINK begins!

Questions?? Contact Nancy Schubbe at schubben@woodburylutheran.org or 651-739-5144 ext. 203.



OTHER MINISTRIES AND EVENTS

PLACE YOUR ORDER TODAY: We are selling fresh picked Colorado peaches to raise money for our Youth Scholarship program. One crate for \$29, or half-crate for \$14.50. (One crate is 18 pounds, approximately 40 juicy peaches). Order forms are available at the welcome desk or online woodburylutheran.org/ministries/youth/youth-fundraising/. Please get your order in TODAY. Delivery day will be around August 10. Please contact the Retter's at 651-739-5326 with questions or to volunteer to help with the event. Thanks for supporting our youth!



MUSIC MINISTRY OPPORTUNITIES: The Praise Band has an opening for a female vocalist for the '15-'16 season. Rehearsals are Tuesdays at 6:30pm beginning in Sept. Celebration, our adult vocal ensemble, has openings for a tenor and a soprano. Rehearsals are Wednesdays at 5:50 pm. beginning in Sept. Instrumentalists are needed for our Christmas Concert Orchestra, players should be high school level or above. For more information about any of these opportunities please contact Mark Shepperd at 651-739-5144 or shepperdm@woodburylutheran.org.

CANCER COMPANIONS: Join us Monday nights, 6:30pm in room 1-300 (VC) this summer for devotional time, conversation and prayer. Whether you are a caregiver, cancer survivor in or out of treatment, or someone who has a dear friend with cancer, you are welcome to join us. If you desire prayer, a personal visit from one of our leadership team, or more information on our meetings, contact Vicki Strong, 651-730-5049.

POSITIONS AVAILABLE: Mothers of Preschoolers (MOPS) needs childcare workers for 2015-2016 school year. MOPS meets every other Monday 9-11am at the VC campus. Ages of children range birth to kindergarten. There are paid and volunteer positions available. MOPS is a Christian ministry that seeks to connect mothers throughout the community to laugh, embrace life, cry, and develop a network for each other. The children's program during MOPS meetings is invaluable to attending moms. Contact: Chelsea Shelton 773-332-0439 or moppetswoodbury@gmail.com.

CAREER TRANSITION: Don't make the same mistakes when being interviewed. Thursday July 23, Career Transition Connection offers Margie Dirks, a Certified Career Management Coach, as she offers help to those wanting to not make the same basic mistakes made in interviews. Join us from 7-8:30pm in room 1- 250 (Fireside VC). We will also have mock interviews from 5:45-6:45pm in the Fireside room. For more information about jobs go to www.woodburylutheran.org/resources-media/support/career-transitions/.

LIFE LINE SCREENING will be at the VC campus on Tuesday Aug. 6. They offer different risk screening tests for Diabetes, Thyroid, Heart Disease, Stroke and more. Call 1-888-653-6441 or visit www.lifelinescreening.com/community-partners to schedule your appointment and find out details on all tests offered.



PART TIME POSITION for Woodbury Lutheran Preschool school year 2015-16: Has God given you a heart for teaching young children and serving families? Come join our dynamic ministry team! Position: Assistant Teacher for Tuesday and Thursday, 11.5 hours per week, salaried position. Requirements: A minimum of 12 college quarter credits in Early Childhood Education or related fields required. Additional work hours may be available. To learn more, contact Dorothy Blaisdell, Director at 651-739-5146 or email blaisdelld@woodburylutheran.org.

"Multiplying Disciples. Transforming lives."