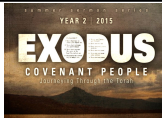


GREATER... Growth ~ Connection ~ Service ~ Reach ~ Sacrifice

GREATER GROWTH



GENESIS VC SUNDAY BIBLE STUDY: Join us at 9:30am in the Genesis Room (VC) for a study entitled 'Deeper into Exodus'.

WEDNESDAY EVENING ADULT BIBLE STUDY: We will be watching the Charles Stanley DVD study, "The Promise to Heal". Join us from 6:30-8pm in room 1-250 (VC Fireside). Contact: Michael Zenner, 651-592-9435.

SUMMER BIBLE STUDIES:

WEDNESDAY Women's Summer Daytime Class

Dawn Droel facilitates a discussion after watching Louie Giglio's DVD series. Topics include; Indescribable, How Great is our God, Symphony, Prayer: Remix and New Year. The study runs Aug. 5–Sept. 3, 9:30-11:15am in room 1-250 (Fireside VC Campus). Contact dawnadroel@gmail.com or 651-260-3272.

WEDNESDAY Women's Bible Study entitled "Friends of Jesus" by Karen Kingsbury. These are their stories. We will study: Simon, the Leper; Martha, the Broken-Hearted; Peter, the Betrayer and more. The "Friends of Jesus" will help you appreciate the Bible and understand how it applies to your relationships with the most important people in your life. Study runs Aug. 5 - Sept. 9, 6:30-8:30pm in room L-600 (VC Family Center). Contact Mary Lehman at lehmanm@woodburylutheran.org or 651-739-5144 ext 201. *Note: Time could change if it meets the needs of the group.

THURSDAY: The Book of Acts - Thursdays in room 1-250 (Fireside VC) till the end of August, 10-11:30am. Taught by Pastor Paul Pfothenauer. The Acts of the Apostles, often referred to simply as Acts, it tells of the founding of the Christian church and the spread of its message to the Roman empire.

GREATER CONNECTION



READY TO TAKE YOUR NEXT STEP? The WLC Connection Center is available to help you determine what your next step might be on the Discipleship PATH. Whether you want to explore options or you already know what your next step will be, our Connectors would love to help! The Connection Center staff is available each Sunday from 9-9:30am, 10:30-11am and 12-12:30pm in the lobby, or at 12pm outside of the Genesis Room.



myWLC: Join WLC's new online community: myWLC! Update your contact information, email other church goers, register/pay for events, view your contributions and print giving statements, look for serving opportunities and lots more! Most importantly: Get Connected! Log on at: woodburylutheran.ccbchurch.com. For more information or help logging in contact Alycen at brothena@woodburylutheran.org.

WLC has a Pastoral Care Assistant (PCA) team who help Pastors with visits. The PCA team would like to know if you, or someone you know, have a specific prayer request, wish to have a visit, or would like a phone call. You may contact Pastor Tim at 651-739-5144 ext. 221 or marshallt@woodburylutheran.org.



GREATER SACRIFICE

As of July 18, 2015

GENERAL FUND

Year to Date Actual:	\$1,472,470
2015 Total Year to date Budget:	\$1,547,765
	(\$75,295)



NEW ONLINE GIVING: Want an easy and secure way to give online? Scan this QR code with your smartphone. No need to create a login and you can give by credit/debit card or e-check.

STOCK DONATIONS: There are many different ways we can donate our time, talents and treasures to Woodbury Lutheran Church. One way some members choose to donate is through the transfer or donation of stocks. A donation form is located by the welcome desk. If you have questions or want more information on how to donate stock please contact Trecie Horner at 651-731-3349.

GREATER REACH



GOT MEALS? WE DO! If you, a neighbor, or loved one in Woodbury or surrounding area have current life circumstances that would make a meal delivery a blessing, let us know! The "mitten ladies" branched out recently and made several dozen prepackaged one-dish meals for crockpot preparation. We also have sweets for dessert. We can deliver hot or frozen for cooking later. Contact Vicki Strong, 651-730-5049 to arrange a delivery.



RUN FOR WATER. RUN FOR LIFE: One of the greatest sources of kidnapping and assault in Africa is the daily walk for water by women and children. Help supply clean water and end this source of human trafficking to our sisters and daughters by supporting those running in the Twin Cities Marathon on Oct. 4. Go to teamworldvision.org/twincities/woodburylutheran to donate or leave your support donation at the church office made out to Team World Vision.

WLC INFORMATION

WANT MORE INFORMATION? Woodbury Lutheran Church ministries, worship schedule and activities at all campuses can be found at the welcome desk in the lobby, at www.woodburylutheran.org, by downloading our church app at <http://get.theapp.co/4bbf>, or contacting us at 651-739-5144. If you want more info go to myWLC.org, where you can connect with a group, see the church calendar, look for volunteer opportunities, check out your profile/financial information and more.



GREATER SERVICE



TRINITY FIRST COMMUNITY MEALS: Looking for a hands on ministry opportunity (great for families too!)? Come meet, serve a warm meal and eat with those who live in the Phillips Neighborhood who are in need of a friendly face and a word of encouragement. Thursday evenings we carpool from WLC at 4:45pm and return by 7:45pm. Contact Lori Golden at 651-459-9533.



OAK HILL CAMPUS ANNOUNCEMENTS



READY TO TAKE YOUR NEXT STEP? The WLC Connection Center is available to help you determine what your next step might be on the Discipleship PATH. Whether you want to explore options or you already know what your next step will be, our Connectors would love to help! The Connection Center staff is available each Sunday from 10-10:30am and 11:30am-12pm in the narthex.

REGISTER NOW AND SAVE TIME THIS FALL! Online registration is available at woodburylutheran.org. SAVE THESE DATES!

- Kids LINK Open House on September 13. Meet small group leaders, find rooms, have treats!
- Weekend of September 20 Kids LINK begins!



Questions?? Contact Molly Schulze at schulzem@woodburylutheran.org or 651-739-5144 ext. 332.

KIDS AND FAMILY MINISTRY

REGISTER NOW AND SAVE TIME THIS FALL! Online registration is available at woodburylutheran.org. SAVE THESE DATES!

- Kids LINK Open House on September 13. Meet small group leaders, find rooms, have treats!
- Weekend of September 19 and 20 Kids LINK begins!



Questions?? Contact Nancy Schubbe at schubben@woodburylutheran.org or 651-739-5144 ext. 203.

YOUTH MINISTRY

MIRACLE LEAGUE SERVICE PROJECT ON JULY 27: Volunteer with the East Metro Miracle League! We will meet at the Bielenberg Sports Center, black field cluster, off of Hargis Road. We'll serve from 5:30-8pm, Sign up online. Serving dates are Monday July 27 and Wednesday, August 19. EMMML is a baseball league for kids with special needs and is a super fun way to serve! On Miracle League nights we'll help our buddies play the game and cheer them on! It's going to be great!



EARN SERVICE HOURS by helping unload and handout peaches. We will need help with making phone calls a few days before, unloading the truck on Aug. 9 and different shifts will be available to handout peaches for customers on Aug. 10. If the fruit ripens faster/slower the date may change. We still need to schedule helpers and if the date changes and you can no longer help we understand - but please don't let this stop you from signing up for the expected date. Sign up information will be emailed this week.

HS CANOEING DAY TRIP (9-12th) is on Thurs., Aug. 14. We will canoe down the St. Croix river by Taylors Falls, 9am-4:30pm. Register online. Things you'll want to be sure to bring: \$15 to pay for you to go, a bag lunch, a swimsuit because you're gonna get soaked, and a friend of course because they'll have a blast!



MS SUMMER STRETCH (SS): Our next Summer Stretch is Thursday, July 30 from 8:15-5pm. The fun event will be at Cascade Bay, go online to check out swimsuit policy and more. Registration for the July 30 event is closed. Our next event is ValleyFair, **TIME CHANGE** - 8:30am-7pm. Any questions contact Lindsey Schmidt (you can check out the website for FAQ).

SUMMER BIBLE STUDY for high school and middle school. Come for treats, games and a study on the book of John.

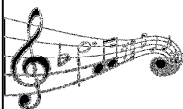
MS Summer Bible Study (6th-8th) Join us on Monday nights 6:30-8:30pm for Bible Study at the Valley Creek Campus in the Bridge.



HS Summer Bible Study (9th-12th) Come to the Brewer home on Tuesday's this summer, 6:30-8:30pm! (1220 Silverwood Court Woodbury, MN).

Reach. Grow. Serve.

OTHER MINISTRIES AND EVENTS



MUSIC MINISTRY OPPORTUNITIES: The Praise Band has an opening for a female vocalist for the 2015-16 season. Rehearsals are Tuesdays at 6:30pm beginning in Sept. Celebration, our adult vocal ensemble, has openings for a tenor and a soprano. Rehearsals are Wednesdays at 5:50 pm. beginning in Sept. Instrumentalists are needed for our Christmas Concert Orchestra, players should be high school level or above. For more information about any of these opportunities please contact Mark Shepperd at 651-739-5144 or shepperdm@woodburylutheran.org.

A FEW CASES OF PEACHES LEFT: We have about 10 crates of Colorado peaches still available for sale. Cost is \$29 for one crate, or half-crate for \$14.50. (One crate is 18 pounds, approximately 40 juicy peaches). Delivery day will be around August 10. Please connect with Steve Retter in the VC lobby on Sunday morning to see what is available or to volunteer to help with the event. Thanks for supporting our Youth Scholarship Program!



CANCER COMPANIONS: Join us Monday nights, 6:30pm in room 1-300 (VC) this summer for devotional time, conversation and prayer. Whether you are a caregiver, cancer survivor in or out of treatment, or someone who has a dear friend with cancer, you are welcome to join us. If you desire prayer, a personal visit from one of our leadership team, or more information on our meetings, contact Vicki Strong, 651-730-5049.

POSITIONS AVAILABLE: Mothers of Preschoolers (MOPS) needs childcare workers for 2015-2016 school year. MOPS meets every other Monday 9-11am at the VC campus. Ages of children range birth to kindergarten. There are paid and volunteer positions available. MOPS is a Christian ministry that seeks to connect mothers throughout the community to laugh, embrace life, cry, and develop a network for each other. The children's program during MOPS meetings is invaluable to attending moms. Contact Chelsea Shelton 773-332-0439 or moppetswoodbury@gmail.com.

AARP SMART DRIVER COURSE: A four hour refresher course will be offered on Tuesday, Aug. 11, 9am-1pm in room 1-300 (VC Isaiah). Cost is \$15 for AARP members, \$20 for non-members. Contact Tom Nelson at 651-735-4492 or tomasofwdby@aol.com to sign up.

WOMEN'S GATHERING GROUP: Join us Mondays, 12:30-4pm in room 1-250 (VC Fireside). Come as often as you can, stay as long as you want. Visit while we create jewelry, caring caps, prayer & comfort shawls, etc. Bring your own project or work on one of ours. Contact Ellen about jewelry at 651-731-9129 or poozelle@usfamily.net and Tamara for general information at 651-734-3974 or tskarl@comcast.net.

LIFE LINE SCREENING will be at the VC campus on Tuesday Aug. 6. They offer different risk screening tests for Diabetes, Thyroid, Heart Disease, Stroke and more. Call 1-888-653-6441 or visit www.lifelinescreening.com/community-partners to schedule your appointment and find out details on all tests offered.



PART TIME POSITION for Woodbury Lutheran Preschool school year 2015-16: Has God given you a heart for teaching young children and serving families? Come join our dynamic ministry team! Position: Assistant Teacher for Tuesday and Thursday, 11.5 hours per week, salaried position. Requirements: A minimum of 12 college quarter credits in Early Childhood Education or related fields required. Additional work hours may be available. To learn more, contact Dorothy Blaisdell, Director at 651-739-5146 or email blaisdelld@woodburylutheran.org.

"Multiplying Disciples. Transforming lives."