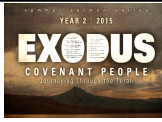


GREATER... Growth ~ Connection ~ Service ~ Reach ~ Sacrifice

GREATER GROWTH

GENESIS VC SUNDAY BIBLE STUDY: Join us at 9:30am in the Genesis Room (VC) for a study entitled 'Deeper into Exodus'.



FAITH AND FRIENDS, a Bible class for adults with developmental disabilities, will meet August 9, 9:30-10:20am, room 1-507 (Ruth VC). Stay in touch with friends over the summer as we gather to learn about Jesus. Questions? Contact Jeanne Dicke 651-704-9464.

WEDNESDAY EVENING ADULT BIBLE STUDY: We will be watching the Charles Stanley DVD study, "Help for Healing". Join us from 6:30-8pm in room 1-250 (VC Fireside). Contact: Michael Zenner, 651-592-9435.

SUMMER BIBLE STUDIES:

WEDNESDAY Women's Summer Daytime Class

Dawn Droel facilitates a discussion after watching Louie Giglio's DVD series. Topics include; Indescribable, How Great is our God, Symphony, Prayer: Remix and New Year. The study runs Aug. 5-Sept. 3, 9:30-11:15am in room 1-250 (Fireside VC Campus). Contact: dawndroel@gmail.com or 651-260-3272.

WEDNESDAY Women's Bible Study entitled "Friends of Jesus" by Karen Kingsbury. These are their stories. We will study: Simon, the Leper; Martha, the Broken-Hearted; Peter, the Betrayer and more. The "Friends of Jesus" will help you appreciate the Bible and understand how it applies to your relationships with the most important people in your life. Study runs Aug. 5 - Sept. 9, 6:30-8:30pm in room L-600 (VC Family Center). Contact: Mary Lehman at lehmanm@woodburylutheran.org or 651-739-5144 ext 201. *Note: Time could change if it meets the needs of the group.

THURSDAY: The Book of Acts - Thursdays in room 1-250 (Fireside VC) till the end of August, 10-11:30am. Taught by Pastor Paul Pfothenauer. The Acts of the Apostles, often referred to simply as Acts, tells of the founding of the Christian church and the spread of its message to the Roman empire.

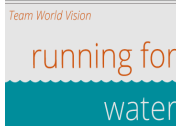
GREATER REACH

HOPE FOR THE JOURNEY HOME is a shelter serving homeless families in Oakdale seeking volunteers. To be eligible to serve in this safe, family friendly environment you will need to have completed a Safe Church training and have a criminal background check. For details or to sign up contact Mike Fouts (mfouts@guardian-angels.org, 651-503-3380) or go to: www.guardian-angels.org/justice-and-outreach/hjh.html.



GOT MEALS? WE DO! If you, a neighbor, or loved one in Woodbury or surrounding area have current life circumstances that would make a meal delivery a blessing, let us know! The "mitten ladies" branched out recently and made several dozen prepackaged one-dish meals for crockpot preparation. We also have sweets for dessert. We can deliver hot or frozen for cooking later. Contact Vicki Strong, 651-730-5049 to arrange a delivery.

RUN FOR WATER. RUN FOR LIFE: One of the greatest sources of kidnapping and assault in Africa is the daily walk for water by women and children. Help supply clean water and end this source of human trafficking to our sisters and daughters by supporting those running in the Twin Cities Marathon on Oct. 4. Go to teamworldvision.org/twincities/ woodburylutheran to donate or leave your support donation at the church office made out to Team World Vision.



GREATER CONNECTION

READY TO TAKE YOUR NEXT STEP? The WLC Connection Center is available to help you determine what your next step might be on the Discipleship PATH. Whether you want to explore options or you already know what your next step will be, our Connectors would love to help! The Connection Center staff is available each Sunday from 9-9:30am, 10:30-11am and 12-12:30pm in the lobby, or at 12pm outside of the Genesis Room.



INTRO TO WOODBURY LUTHERAN CLASS: Meets August 16 at 9:30am (VC). This class is especially for second and third time guests or anyone interested in finding out more about Woodbury Lutheran. Join us to find out who we are as a congregation, what we believe and value, where we see God leading us and what we hope for you as a growing follower of Jesus. The class meets on the third Sunday of each month in the Lounge (VC) at 9:30am.

GREATER SACRIFICE

As of July 18, 2015

GENERAL FUND

Year to Date Actual:	\$1,472,470
2015 Total Year to date Budget:	\$1,547,765
	(\$75,295)



NEW ONLINE GIVING: Want an easy and secure way to give online? Scan this QR code with your smartphone. No need to create a login and you can give by credit/debit card or e-check.

GREATER SERVICE

OPEN DOORS THURSDAYS shares a catered meal with members of the community who utilize the food shelf, those who attend Celebrate Recovery on Thursday and is open to anyone who would like to attend. Want to serve? We need help on Aug. 13, 4:45-5:15pm with set up and service in room L-800 (VC Rhoda). Help is also needed with clean up, greeting guests, helping children get settled or providing a dessert. Contact Vicki Strong, 651-730-5049 to volunteer. We are so thankful for the generosity of TST Catering (Tony and Stacy Moran) for donating the meal.



PRAYER SHAWL MINISTRY: Would you be willing to knit or crochet a shawl which would be given to someone who is experiencing a life trauma, an illness, or loss? Call Tamara (651)734-3974 or tskarl@comcast.net.



OAK HILL CAMPUS ANNOUNCEMENTS



READY TO TAKE YOUR NEXT STEP? The WLC Connection Center is available to help you determine what your next step might be on the Discipleship PATH. Whether you want to explore options or you already know what your next step will be, our Connectors would love to help! The Connection Center staff is available each Sunday from 10-10:30am and 11:30am-12pm in the narthex.

REGISTER NOW FOR KIDS LINK AND SAVE TIME THIS FALL! Online registration is available at woodburylutheran.org. SAVE THESE DATES!

- Kids LINK Open House on September 13. Meet small group leaders, find rooms, have treats!
- Weekend of September 20 Kids LINK begins!

Questions?? Contact Molly Schulze at schulzem@woodburylutheran.org or 651-739-5144 ext. 332.



WLC INFORMATION

WANT MORE INFORMATION? Woodbury Lutheran Church ministries, worship schedule and activities at [all campuses](http://allcampuses) can be found at the welcome desk in the lobby, at www.woodburylutheran.org, by downloading our church app at <http://get.theapp.co/4bbf>, or contacting us at **651-739-5144**. If you want more info go to myWLC.org, where you can connect with a group, see the church calendar, look for volunteer opportunities, check out your profile/financial information and more.



DOING LIFE
Together

YOUTH MINISTRY

EARN SERVICE HOURS by helping unload and handout peaches. We will need help with making phone calls a few days before, unloading the truck on Sunday evening Aug. 9 and different shifts will be available to handout peaches for customers all day on Aug. 10. If the fruit ripens faster/slower the date may change. We still need to schedule helpers and if the date changes and you can no longer help, we understand - but please don't let this stop you from signing up for the expected date. Contact Becky Nelson to help at 651-501-1134.



HS CANOEING DAY TRIP (9-12th) is on Thurs., Aug. 20. We will canoe down the St. Croix river by Taylors Falls, 9am-4:30pm. Register online. Things you'll want to be sure to bring: \$15 to pay for you to go, a bag lunch, a swimsuit because you're gonna get soaked, and a friend of course because they'll have a blast!

MS SUMMER STRETCH (SS): Our last Summer Stretch is ValleyFair on Thursday, Aug. 6 from 8:30-7pm. Registration for the Aug. 6 event is closed. Any questions contact Lindsey Schmidt (you can check out the website for FAQ).



MIRACLE LEAGUE SERVICE PROJECT: Volunteer with the East Metro Miracle League! We will meet at the Bielenberg Sports Center, black field cluster, off of Hargis Road. We'll serve from 5:30 -8pm, Sign up online. Serving dates are Wednesday August 19, with a make up date on August 24! EMMML is a baseball league for kids with special needs and is a super fun way to serve! On Miracle League nights we'll help our buddies play the game and cheer them on! It's going to be great

SUMMER BIBLE STUDY for high school and middle school. Come for treats, games and a study on the book of John.

MS Summer Bible Study (6th-8th) Join us on Monday nights 6:30-8:30pm for Bible Study at the Valley Creek Campus in the Bridge.



HS Summer Bible Study (9th-12th) NO STUDY THIS WEEK. Join us at the Brewer home on Tuesday, AUGUST 11, 6:30-8:30pm! (1220 Silverwood Court, Woodbury, MN).

KIDS AND FAMILY MINISTRY

REGISTER NOW FOR KIDS LINK AND SAVE TIME THIS FALL! Online registration is available at woodburylutheran.org. SAVE THESE DATES!

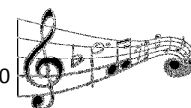
- Kids LINK Open House on September 13. Meet small group leaders, find rooms, have treats!
- Weekend of September 19 and 20 Kids LINK begins!

Questions?? Contact Nancy Schubbe at schubben@woodburylutheran.org or 651-739-5144 ext. 203.



OTHER MINISTRIES AND EVENTS

MUSIC MINISTRY OPPORTUNITIES: Celebration, our adult vocal ensemble, has an opening for a tenor. Rehearsals are Wednesdays at 5:50 pm. beginning in September. For more information please contact Mark Shepperd at 651-739-5144 or shepperdm@woodburylutheran.org.



CANCER COMPANIONS: Join us Monday nights, 6:30pm in room 1-300 (VC) this summer for devotional time, conversation and prayer. Whether you are a caregiver, cancer survivor in or out of treatment, or someone who has a dear friend with cancer, you are welcome to join us. If you desire prayer, a personal visit from one of our leadership team, or more information on our meetings, contact Vicki Strong, 651-730-5049.



POSITIONS AVAILABLE: Mothers of Preschoolers (MOPS) needs childcare workers for 2015-2016 school year. MOPS meets every other Monday 9-11am at the VC campus. Ages of children range birth to kindergarten. There are paid and volunteer positions available. MOPS is a Christian ministry that seeks to connect mothers throughout the community to laugh, embrace life, cry, and develop a network for each other. The children's program during MOPS meetings is invaluable to attending moms. Contact Chelsea Shelton 773-332-0439 or moppetswoodbury@gmail.com.

AARP SMART DRIVER COURSE: A four hour refresher course will be offered on Tuesday, Aug. 11, 9am-1pm in room 1-300 (VC Isaiah). Cost is \$15 for AARP members, \$20 for non-members. Contact Tom Nelson at 651-735-4492 or tomasofwdby@aol.com to sign up.

CAREER TRANSITION CONNECTION happily offers Lynette Crane, as she presents "Introverts In The Workplace: Managing Challenges In The Workplace". She will share ideas on how to make the most of your strengths and skills to improve your workplace dynamics and enhance your chances for advancement. Join us at the August 13 meeting which starts at 7pm in room 1-250 (Fireside VC). There will be resume reviews in the same room from 6pm till the start of the meeting. For more information, check out Career Transition Connection at the new Woodbury Lutheran website under the support tab.

MOM, CAN YOU PRAY FOR ME? Do you have a child or grandchild in a local school? They need our prayers! Interested? For more information about joining Moms In Prayer for Stillwater High School, contact Paula at orenhome@q.com, for Stillwater Jr. High contact Elaine at elaine.hearne@hotmail.com, for Oak-Land Jr. High contact Ann at annmarie.gibbs@gmail.com, for St. Paul schools, contact Kim at kdolan1006@comcast.net, for Woodbury Middle and H.S. contact Louise at sampsonseven@yahoo.com and for Math & Science contact Jenny at clemay8178@aol.com.



"Multiplying Disciples. Transforming lives."