

GREATER... Growth ~ Connection ~ Service ~ Reach ~ Sacrifice

GREATER GROWTH



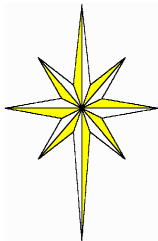
GENESIS VC SUNDAY BIBLE STUDY: Counter Culture: A Compassionate call to counter culture in a world of Poverty, Same-Sex Marriage, Racism, Slavery, Immigration, Persecution, Abortion, Orphans, Pornography. Meets at 9:30am in the Genesis Room (VC).

SUNDAY STUDY: Pride, it shuts us in and shuts God and others out. It keeps us from saying what needs to be said and hearing what needs to be heard. Join us for a study entitled "Killing It - Pride". The study meets in room 1-301 at 9:30am (VC), facilitated by Dave Nelson.

WOMEN OF THE WORD(WOW): Winter session resumes Jan. 6, 9:15-11:15am. No registration for the classes, childcare requires registration. Classes are: The Patriarchs : Encountering the God of Abraham, Isaac and Jacob by Beth Moore; When Forgiveness Doesn't Make Sense: The bottom-line issue of life is forgiveness by Dr. Robert Jeffress; 1,2, 3 JOHN: What Love Is by Kelly Minter (this class is for mom's of young children).

FAITH AND FRIEND: We will resume our study on January 10. Sunday Morning Bible Class for adults with developmental disabilities in room 1-507(VC). We are studying Men and Women of the Bible. For more information, call Jeanne at 651-704-9464.

WEDNESDAY EVENING ADULT BIBLE STUDY: Join us for a Charles Stanley DVD study entitled, "God Always Rewards Obedience", 6:30-8pm in room 1-250 (VC). Contact: Michael Zenner, 651-592-9435.



GREATER REACH



COME AND LEARN about WLC's 2016 Short Term Mission (STM) experiences and how you can participate! A brief informational meeting about the STM experiences will be held on Sunday, January 17, 12:15-12:45pm in the Genesis Sanctuary on the Valley Creek campus. Pastor Drew and the Short Term Mission Team will be leading this meeting. Can't make it or have questions? Please contact Pastor Drew Bayless at baylessa@woodburylutheran.org or 651-739-5144x205.

GREATER CONNECTION



READY TO TAKE YOUR NEXT STEP? The WLC Connection Center is available to help you determine what your next step might be on the Discipleship PATH. Whether you want to explore options or you already know what your next step will be, our Connectors would love to help! The Connection Center staff is available each Saturday before and after 5pm worship and each Sunday from 9-9:30, 10:30-11 and 12-12:15 in the lobby, or from 10:45-11 and 12 outside of the Genesis room.

WLC has a Pastoral Care Assistant (PCA) team who help Pastors with visits. The PCA team would like to know if you, or someone you know, have a specific prayer request, wish to have a visit, or would like a phone call. You may contact Pastor Tim at 651-739-5144 ext. 221 or marshallt@woodburylutheran.org.

NEW MEMBER CLASS: Is becoming a member of Woodbury Lutheran Church your next step? Join us for a four-week membership class starting January 10 at 9:30am in the Fireside room (VC). The membership class goes in depth on our beliefs and practices, our discipleship process as well as our expectations of members. Contact Alycen Brothen to register, 651-739-5144 x212 or brothena@woodburylutheran.org.

INTRO TO WOODBURY LUTHERAN CLASS meets Jan. 17 at 9:30am in the Lounge (VC). This class is especially for second and third time guests, or anyone interested in finding out more about Woodbury Lutheran. Join us to find out who we are as a congregation, what we believe and value, where we see God leading us and what we hope for you as a growing follower of Jesus. Intro to WLC meets on the third Sunday of each month.

myWLC: Join WLC's online community: myWLC! Update your contact information, email other church goers, register/pay for events, view your contributions and print giving statements, look for serving opportunities and lots more! Most importantly: Get Connected! Log on at: myWLC.org. For more information or help logging in contact: Alycen at brothena@woodburylutheran.org.

GREATER SERVICE



CARING CAPS: Would you be willing to knit or crochet some soft, Chemo/Neuro Surgery caps and baby caps/afghans? For information, call Tamara 651- 734-3974 or email tskarl@comcast.net.

GREATER SACRIFICE

GIVING STATEMENTS are available for viewing at any time at myWLC.org. All statements will be finalized by Jan. 7, 2016 for the 2015 year. Reminder: We will not be mailing out year-end statements. If you do not have computer access at home or need help, please contact the church office.

HOW DO I GET MY ONLINE GIVING STATEMENT? Below is the myWLC Guide to accessing your giving statements.

1. Log in to myWLC at mywlc.org.
2. Click on Give in the menu on the left.
3. Select the Schedule/History tab.
4. Click on the black Giving Statement button on the right.
5. On the next screen select: Type - Family; Date Range - Last Year; then Click Run Report.

DID YOU DONATE STOCK recently? Someone donated NTI stock but did not leave their name. If that was you, please contact Trece Horner at 651-731-3349. Thanks.

WAYS TO GIVE:



Online Giving QR
OR go to woodburylutheran.org/giving
OR Text to give at 651-504-0500



OAK HILL CAMPUS ANNOUNCEMENTS



READY TO TAKE YOUR NEXT STEP? The WLC Connection Center is available to help you determine what your next step might be on the Discipleship PATH. Whether you want to explore options or you already know what your next step will be, our Connectors would love to help! The Connection Center staff is available each Sunday from 10-10:30am and 11:30am-12pm in the narthex.

WOMEN OF THE WORD(WOW): Winter session resumes Jan. 7. OH Campus WOW meets on Thursday, 9:30am.

INTERESTED in becoming a member of Woodbury Lutheran Church? Contact Pastor Derek Broten at 651-739-5144 or brotend@woodburylutheran.org to find out more.



CONFIDENTIAL! That's what Stephen Ministry is. A Stephen Minister keeps everything a care receiver shares confidential. It's a cornerstone of Stephen Ministry and one of its most important principles. Need someone to talk with? Contact: Cheryl O. (women) 651-777-5315, or Paul L. (men) 651-653-3467.

"Multiplying Disciples. Transforming Lives"

To follow Jesus Christ, grow as His disciples, serving and telling others, so that all may know Him as Savior and Lord.

WLC INFORMATION

WANT MORE INFORMATION? Woodbury Lutheran Church ministries, worship schedule and activities at [all campuses](#) can be found at the welcome desk in the lobby, at www.woodburylutheran.org, by down-loading our church app at <http://get.theapp.co/4bbf>, or contacting us at **651-739-5144**. If you want more info go to **myWLC.org**, where you can connect with a group, see the church calendar, look for volunteer opportunities, check out your profile/financial information and more.



YOUTH MINISTRY - OH AND VC

SUMMER MISSION TRIPS: Middle School(6th-8th) is going to Green Bay, WI, June 19-24, 2016, cost is \$350 until full. High School/Middle School (6th-12th) trip is going to Burtrum, MN, June 19-24, 2016, cost is \$150. Find out more about the 2016 Summer Mission trips or register at wlc youth.org. If a trip fills a wait list will form. Contact: Lindsey Schmidt at 651-739-5144.



ARCTIC BLAST RETREAT (6th-12th): MS and HS students are going together this year for the Arctic Blast Retreat! Join us on Jan. 22-24, 2016 at Camp Lebanon. Registration is open online at wlc youth.org. Sign up now! Cost is \$115 until full. Friends are welcome!!! Broomball, camp, great worship and snow tubing!

NATIONAL YOUTH GATHERING (8th-12th): We'll be joining about 25,000 Lutherans gathering to praise God in worship and more in New Orleans, LA - July 15-21, 2016. Spots are still available. Check out the details and sign up at wlc youth.org.



MIDDLE SCHOOL FEED MY STARVING CHILDREN EVENT: On Friday, January 15 the WLC middle schoolers will be heading to FMSC to pack meals for kids and families around the world. Event will be from 7-10pm, meet at the VC campus. Registration is required. Sign up at wlc youth.org. Questions: schmidt@woodburylutheran.org.

ALL CAMPUS YOUTH CLASS SCHEDULE: All classes resume regular schedules this week, starting Jan. 6.. See you at Wednesday night and Sunday morning youth programming!



KIDS AND FAMILY MINISTRY

KID'S CARE NURSERY is looking for caring individuals or families who would like to serve in our Sunday Morning nursery, any service. Contact Molly Keiser at kieserm@woodburylutheran.org to volunteer or if you have questions.



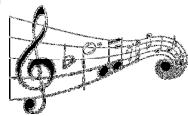
OTHER MINISTRIES AND EVENTS

WLC PRESCHOOL OPEN HOUSE & FAMILY FUN NIGHT: You are invited to join us for an evening of family fun and games! Woodbury Lutheran Preschool's annual OPEN HOUSE & FAMILY FUN NIGHT will take place on Tuesday, January 12, 6-7:30pm. in the Genesis Room (VC) and Preschool Hallway. Classrooms will be open, staff members will be available to answer questions about our excellent early education programs, and there will be popcorn, beverages, Jumpity Jump Bouncers, Cake Walk, Face Painting, and much fun for all. 2016-17 Enrollment now being accepted!



CELEBRATE Jane Dibbern's retirement at the VC campus on January 9, 7pm. Feel free to invite others who have been impacted by Jane's ministry. All are welcome to attend! Drop off cards for Jane on Sundays in December in the church office to thank her for her ministry at WLC. If you'd like to include a monetary gift, make checks out to WLC with "Jane Dibbern" in the memo.

SINGERS! The Woodbury Lutheran Chorale extends an invitation to high school age students and adults who love to sing to join them in rehearsal on Wednesdays, 7-8:30pm, in the church sanctuary. In addition to preparing music for Sunday mornings the Chorale will soon be working on music for Lent and Easter. There are no auditions or qualifications other than a willing heart to serve. Join us in ministry through music! (If you desire additional information, you may contact Mark Shepperd at 651-739-5144).



CELEBRATION, our adult vocal ensemble, has an opening for a tenor. Rehearsals are Wednesdays at 5:50pm. Please contact Mark Shepperd for more information at 651-739-5144 or shepperdm@woodburylutheran.org.

AARP SMART DRIVER COURSE: A four hour refresher course will be offered on Tuesday, January 5, 9am-12:30pm in room 1-300 (VC Isaiah). AARP members pay \$15, non AARP members pay \$20. Contact Tom Nelson at 651-735-4492 or tomasofwdby@aol.com to sign up.

WLC ENDOWMENT FUND: The purpose of the Endowment Fund is to further the mission of WLC over and above our regular operating budget. Our most current fund recipients are Feed My Starving Children and Valley Outreach in Stillwater! Thank you for joining in bringing our vision of multiplying disciples to life through the WLC endowment fund! If you would like to donate to the fund, consider one of the following gifts: Memorial gifts that honor a loved one; Honorarium gifts that praise God for life milestones; Life insurance designations to the fund or an Estate gift. Questions? Contact Mark Stutelberg at stutelbergm@woodburylutheran.org.

"He must become greater, and I must become less." - John 3:30